

ELEVATE

ELEVATEPROPERTYGROUP.CO.UK

DISCLAIMER:

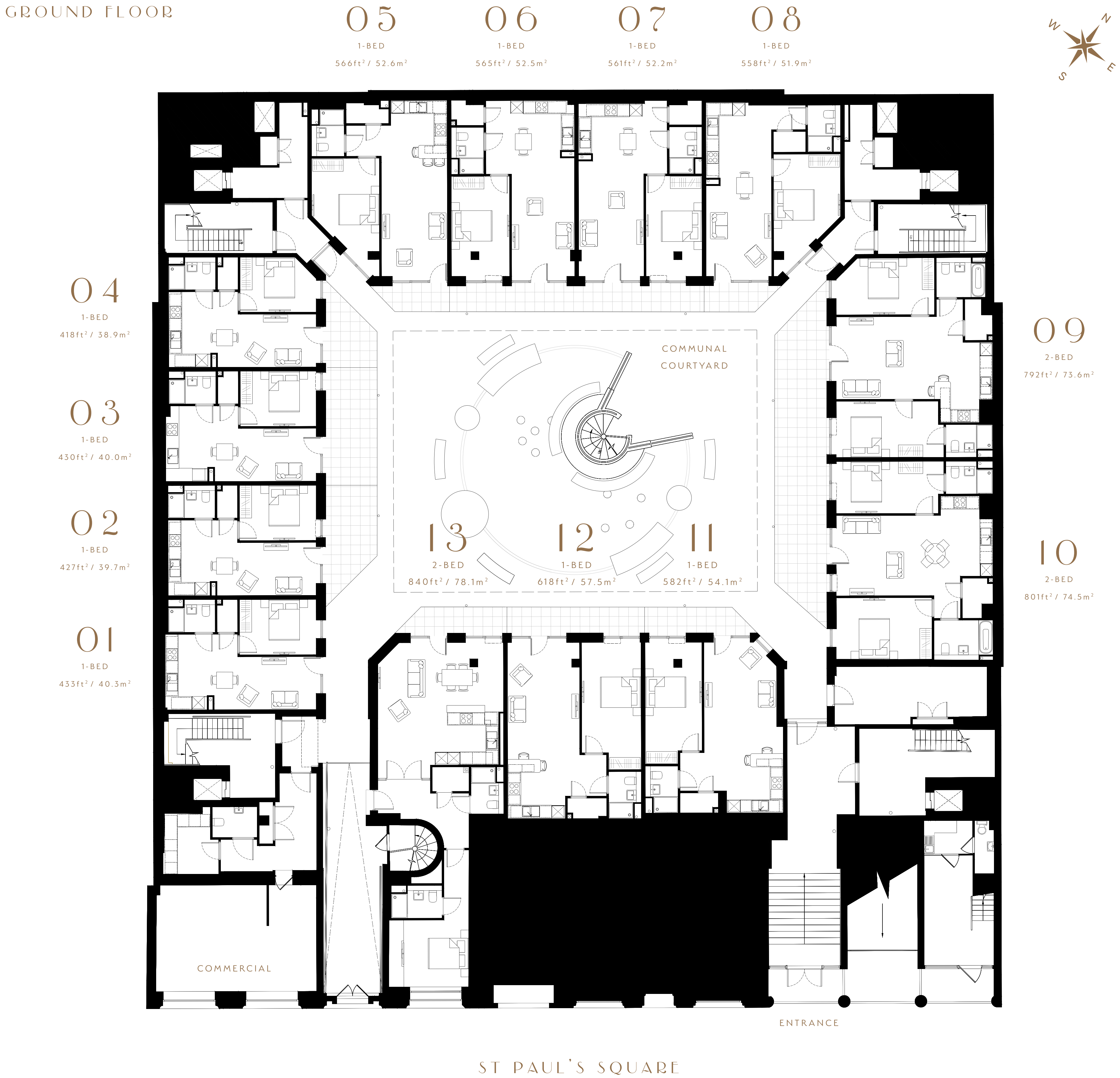
These floor plans are for guidance purposes only and were prepared from preliminary plans and indicative layouts well before the completion of the properties. Wardrobes and furniture as shown are not included but are merely a guide and an indication of suggested layout.

Please note kitchen and bathroom layouts are also on indicative layout. Please ask for more detailed drawings when available. Prospective purchasers should not rely on this information and must ensure their solicitor checks the plans and specification attached to their contract.

Apartment plans are deemed to be correct but precise details may vary.
Internal area is accurate to within 5%.



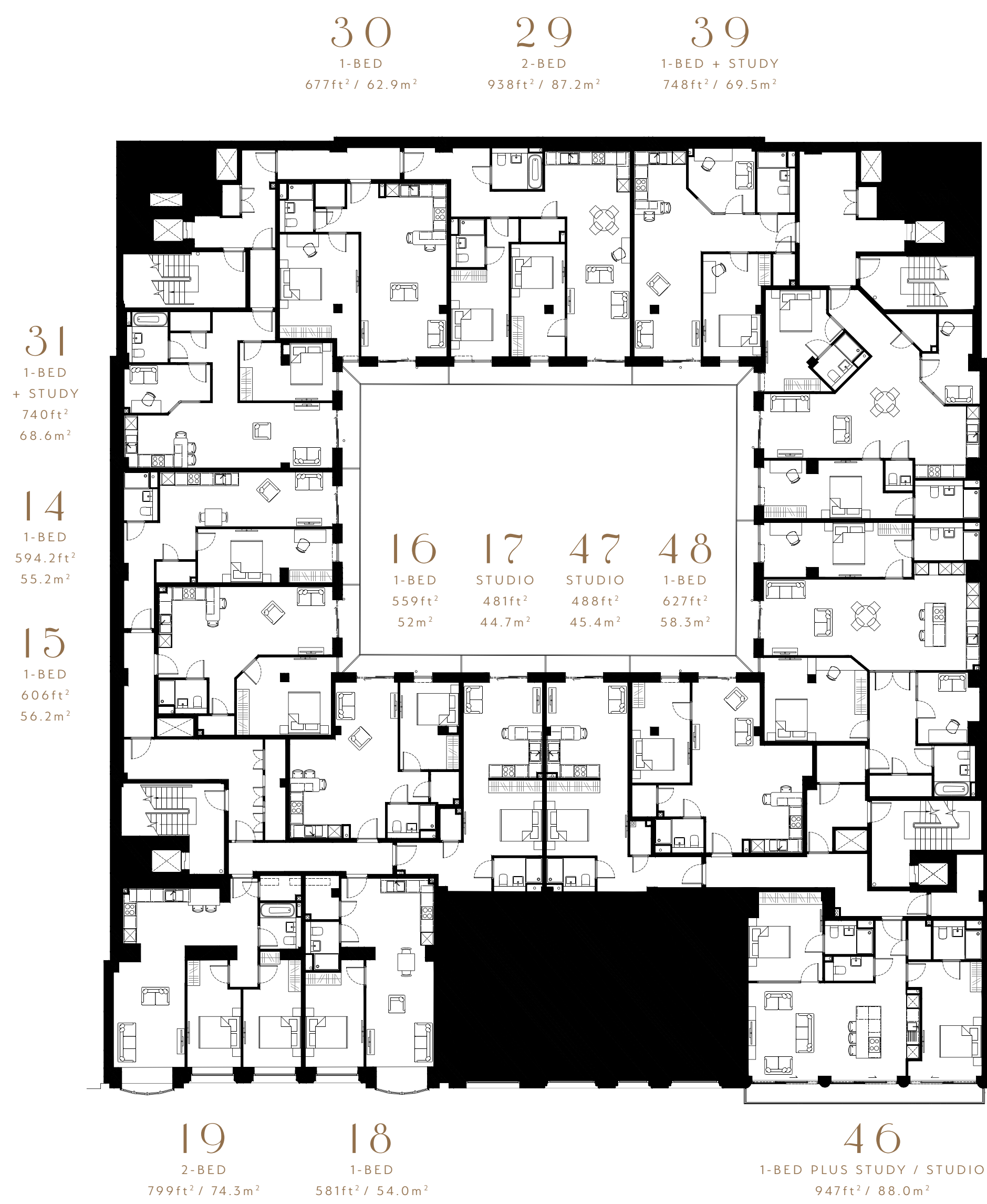
GROUND FLOOR



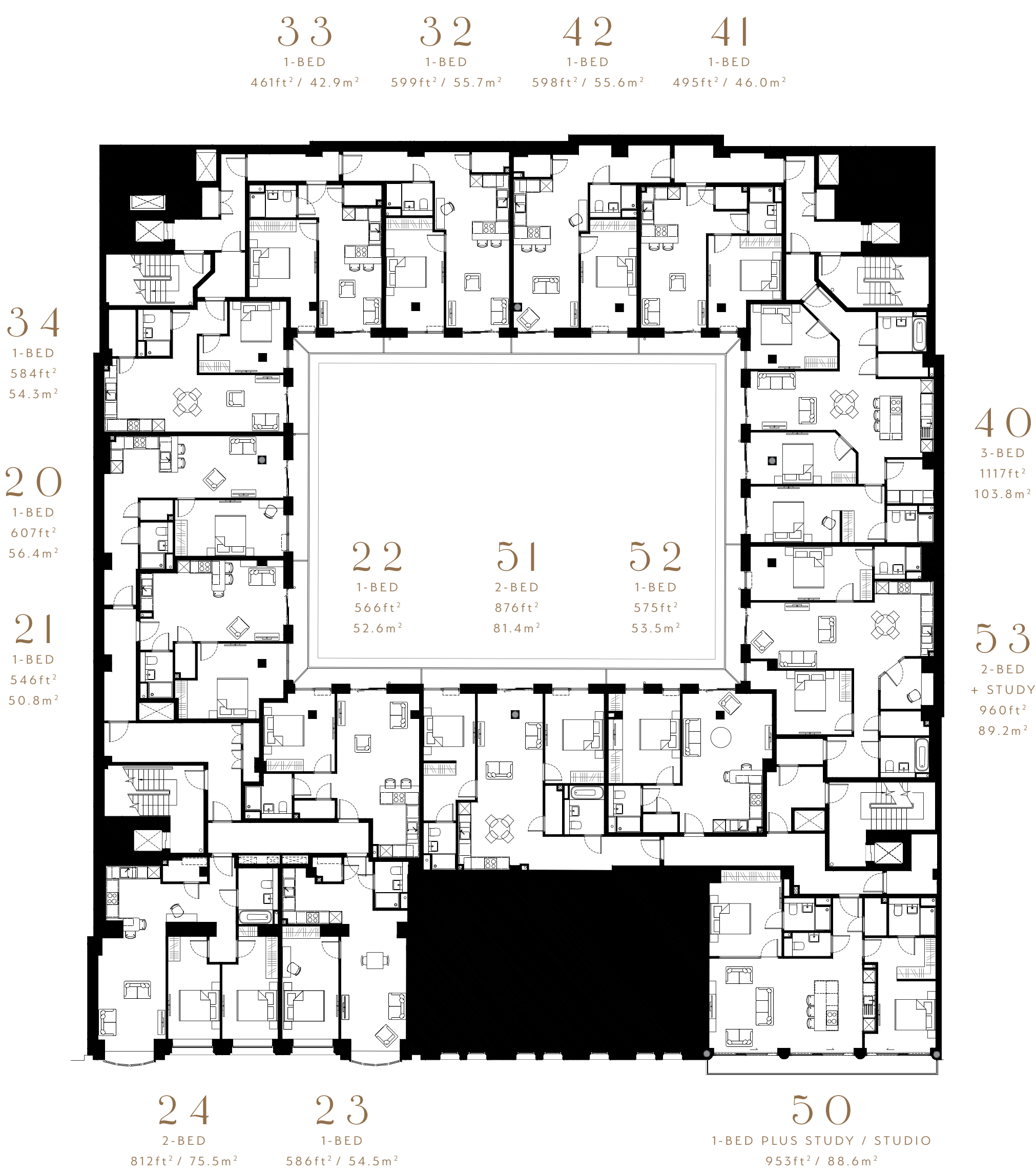
No. 30 ST PAULS - 58 APARTMENTS

2	STUDIOS	(481 – 488 SQ.FT)
35	ONE BEDS	(412 – 677 SQ.FT)
6	ONE BEDS PLUS STUDY / STUDIO	(740 – 963 SQ.FT)
9	TWO BEDS	(753 – 938 SQ.FT)
4	TWO BEDS PLUS STUDY	(960 – 1,362 SQ.FT)
2	THREE BEDS	(1,032 – 1,117 SQ.FT)

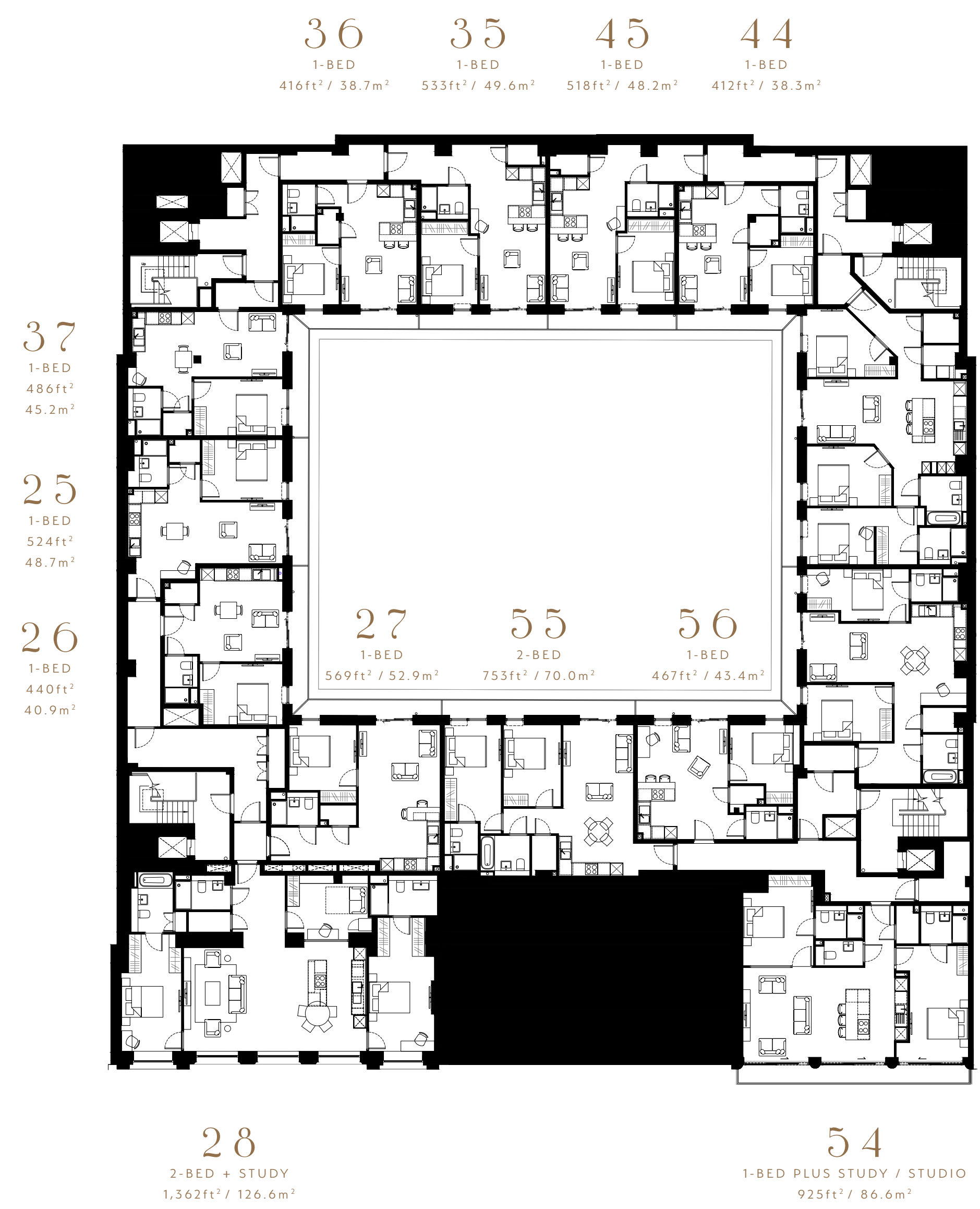
FIRST FLOOR



SECOND FLOOR



THIRD FLOOR



FOURTH FLOOR

